



ATD-7036
Heavy-Duty 2-Shelf Utility Cart
Owner's Manual



Features:

- Heavy-Duty polypropylene material
- Molded handle with storage compartments
- Includes built-in tool holders, parts tray, cable organizer, and movable cable hooks
- (4) 5-inch non-marring rubber caster wheels (2 - 360° swivel)

Specifications:

- Cart Capacity: 500 lbs. (250 lbs. per shelf)
- Overall: 17" L x 34" W x 32.5" H

⚠ SAFETY INFORMATION

Please read and understand this entire manual before attempting to assemble, operate or install the product.

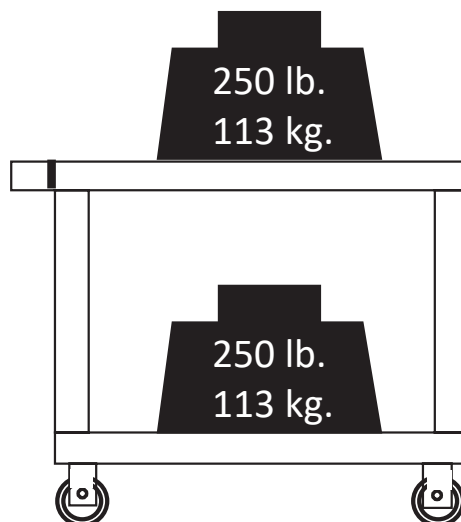
- Wear safety glasses when assembling this product.
- Do not alter this product in any manner. This may cause product damage or personal injury.
- Keep the product on a level surface. The product may become unstable and tip if stored or moved on an unlevel surface, and may cause personal injury or product damage.
- The maximum loaded weight for this unit is not more than 250lb. (113Kg) per shelf and 500lb.(227Kg) total.
- Always wear safety goggles when working with tools and equipment.

⚠ WARNING

- To prevent personal injury and/or property damage, distribute the weight in this item evenly.

CAUTION

- Do not stand on this product. You may fall, which may cause personal injury.
- Do not exceed a maximum load of 250lb. (113kg) per shelf.



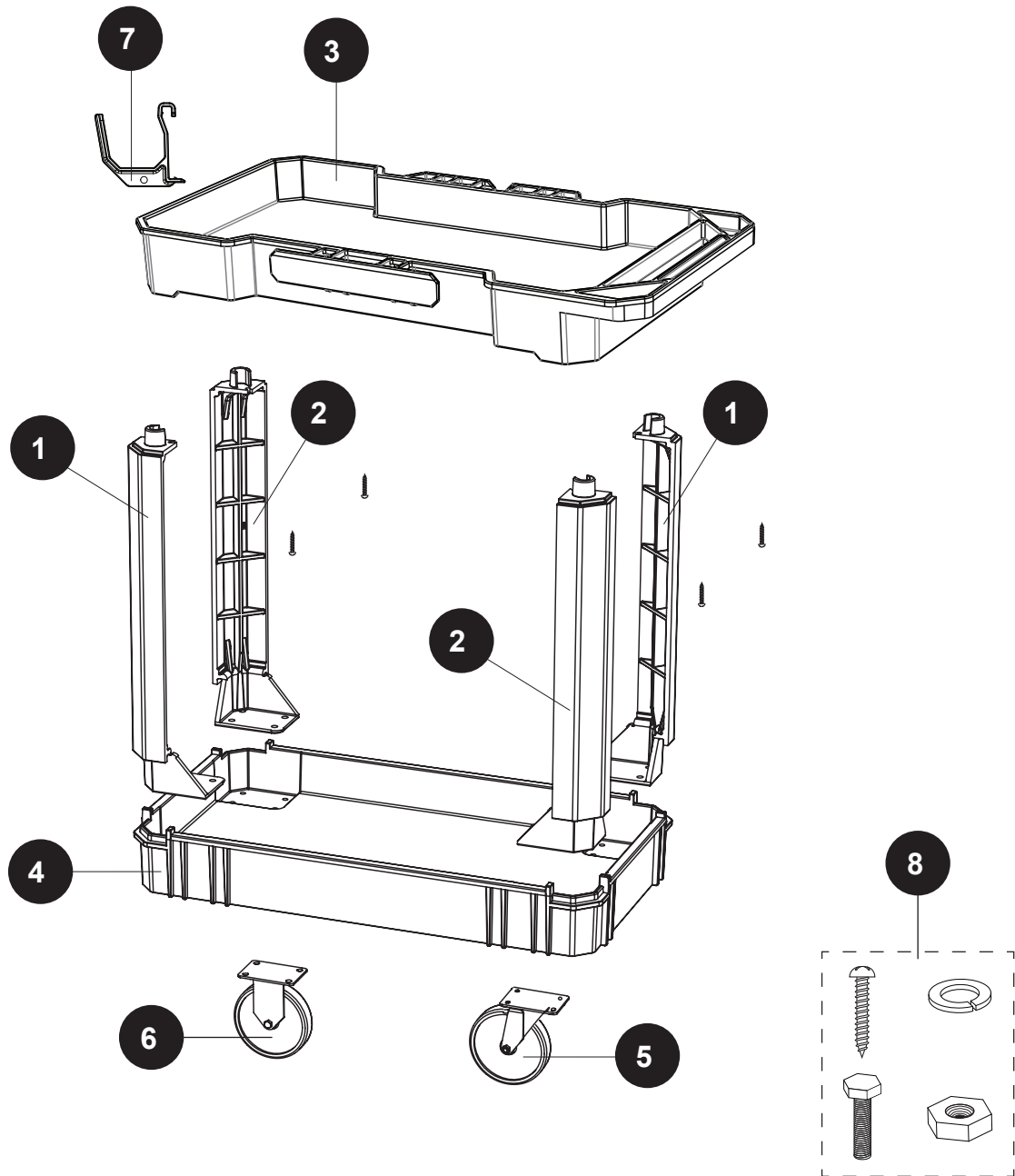
PREPARATION

Before beginning assembly of product, make sure all parts are present. Compare parts with package contents list and hardware contents list. If any part is missing or damaged, do not attempt to assemble the product.

Tools Required for Assembly (not included): Rubber Mallet, Phillips Screwdriver, Safety Goggles, Flathead Screwdriver, Wrench.

REPLACEMENT PARTS

Not all components of this product are replacement items, but are illustrated as a convenient reference for position in the assembly sequence. When ordering parts, give model number, part number and description. Call your distributor for current pricing:



ITEM#	ORDERING PART#	PART DESCRIPTION
1	PRT7036-01	LEG
2	PRT7036-02	LEG
3	PRT7036-03	TOP SHELF
4	PRT7036-04	BOTTOM SHELF
5	PRT7036-05	SWIVEL CASTER
6	PRT7036-06	FIXED CASTER
7	PRT7036-07	ACCESSORY HOOK (2 PCS)
8	PRT7036-HK	HARDWARE KIT

HARDWARE KIT INCLUDES:
 (4) M6 x 25 MM PHILLIPS HEAD SCREWS
 (16) M8 x 35mm BOLTS
 (16) M8 SPRING WASHERS
 (16) M8 HEX NUTS

ASSEMBLY INSTRUCTIONS

1. With the top shelf (3) upside down, attach the legs (1 and 2) to the top shelf, as shown. Tap gently with a rubber mallet to seat them completely in place if needed.

NOTE: The legs (1 & 2) are labeled A & B to match the A & B on their corresponding mounting positions in the top shelf (3).

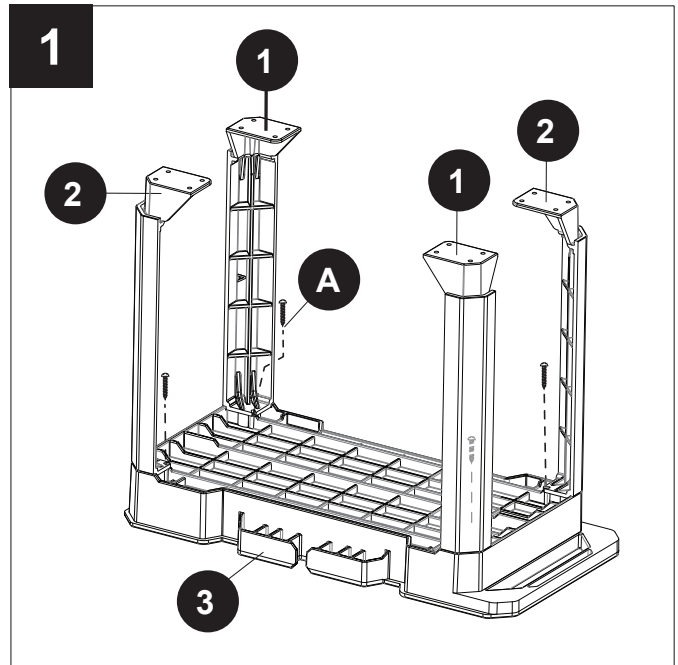
Using a Phillips screwdriver, secure the legs (1 and 2) to the top shelf (3) with the Phillips head screws (A) (one per leg).

DO NOT OVERTIGHTEN.


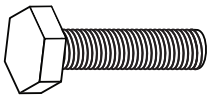
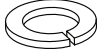
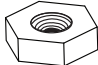
2. Position the bottom shelf (4) on the legs (1 and 2) as shown.

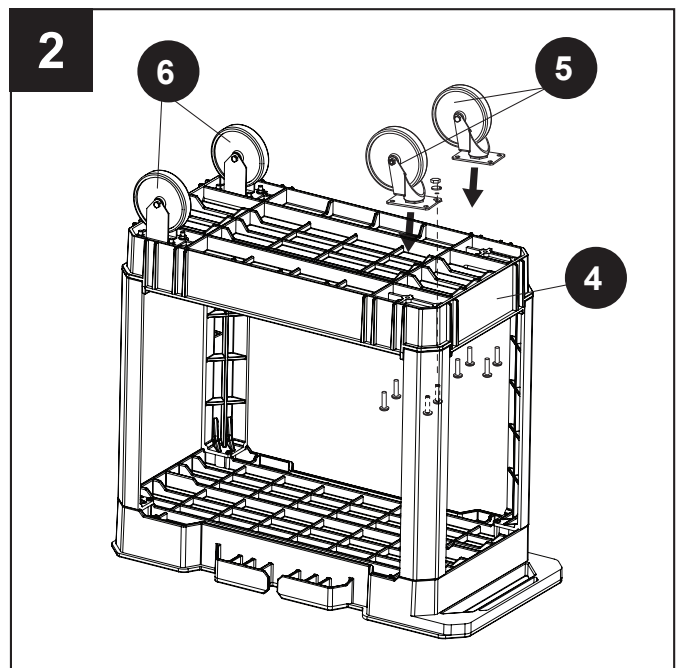
Place the fixed casters (6) into the pockets into the front corners of the bottom shelf, as shown. Secure them with four screws (B), lock washers (C), and hex nuts (D) each.

Place the swivel casters (5) into the pockets in the back corners of the bottom shelf (4), as shown. Secure them with four screws (B), lock washers (C), and hex nuts (D) each.



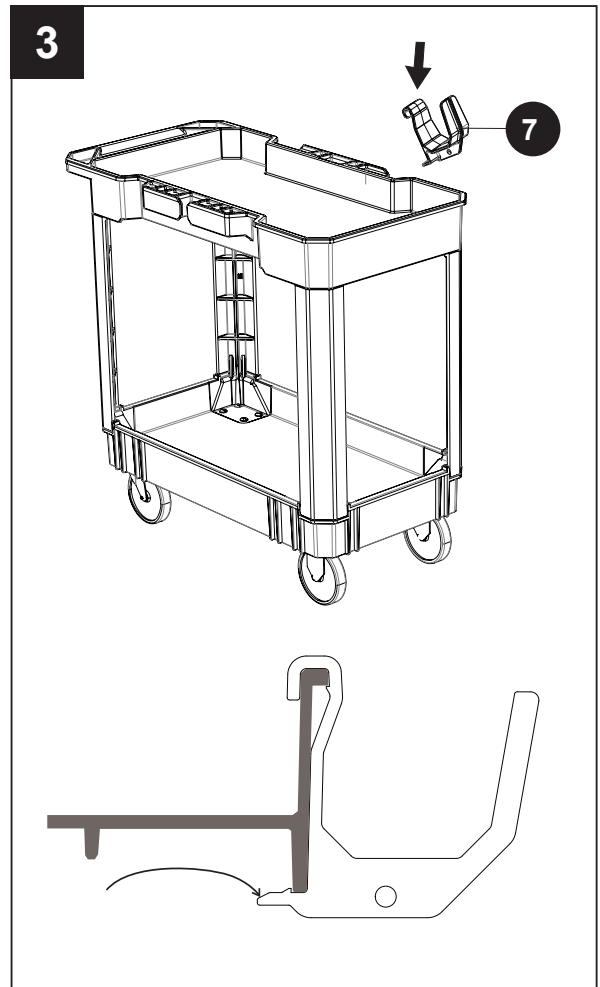
Hardware Used

- | | | | |
|----------|--------------------------------------|-------------------------------------------------------------------------------------|------|
| A | M6 x 25 mm
Phillips Head
Screw |  | x 4 |
| B | M8 x 35 mm
Bolt |  | x 16 |
| C | M8 mm
Spring Washer |  | x 16 |
| D | M8 mm Hex Nut |  | x 16 |



ASSEMBLY INSTRUCTIONS CONTINUED

3. Click accessory hooks (7) onto the top or bottom tray wherever you want them. Be sure they don't interfere with your workspace.



CARE AND MAINTENANCE

- Check the overall condition of the product periodically.
- Tighten any loose bolts and repair or replace any broken parts.
- Clean with soap and water, or any mild degreaser that is safe for polypropylene.



THIS WARRANTY AND CONFIRMED RECEIPT(S) SHOULD BE RETAINED BY THE CUSTOMER AT ALL TIMES

PURCHASED FROM: _____

DATE PURCHASED: _____

INVOICE/RECEIPT NUMBER: _____

Your ATD-7036 is warranted for a period of 12 months from the original purchase date.

For a period of one (1) year from your purchase date, ATD Tools, Inc. will repair or replace (at its option) without charge, your ATD product if it was purchased new and the product has failed due to a defect in material or workmanship which you experienced during normal use of the product. This limited warranty is your exclusive remedy.

To access the benefits of this warranty, contact your supplier, or point of sale directly. You may be advised to return the product under warranty, freight prepaid, to your supplier for warranty determination.

If this ATD product is altered, abused, misused, modified, or undergoes service by an unauthorized technician, your warranty will be void. We are not responsible for damage to ornamental designs you place on this ATD product and such ornamentation should not cover any warnings or instructions or they may void the warranty. This warranty does not cover scratches, superficial dents, and other abrasions to the paint finish that occur under normal use. It also does not cover normal wear items such as but not limited to brushes, batteries, drill bits, drill chucks, pads or blades.

Subject to the law in your state:

- (1) Your sole and exclusive remedy is repair or replacement of the defective product as described above.
- (2) ATD is not liable for any incidental damages, including but not limited to, lost profits and unforeseeable consequences.
- (3) The repair and replacement of this product under the express limited warranty described above is your exclusive remedy and is provided in lieu of all other warranties, express or implied. All other warranties, including implied warranties and warranties of merchantability or fitness for a particular purpose are disclaimed and, if disclaimer is prohibited, these warranties are limited to one year from your date of purchase of this product.

Some states' laws do not allow limited durations on certain implied warranties and some states' laws do not allow limitations on incidental or consequential damages. You should consult the law in your state to determine how your rights may vary.

[Affix receipt or invoice here for safe keeping]