



ATD-5197K 17 Gallon Low Profile Oil Drain with Electric Pump Owner's Manual



Features:

- Made-in-USA 110V UL listed electric pump for easy waste oil discharge
- 17 Gallon capacity drain with 6.5' long discharge hose with metal "J" spout
- Oversize fluid collection area with removable metal screen
- Long T-handle allows easy mobility
- Overall Dimensions: 43.30 in. x 27.55 in. x 7.48 in.

WARNING:


Read carefully and understand all **ASSEMBLY AND OPERATION INSTRUCTIONS** before operating. Failure to follow the safety rules and other basic safety precautions may result in serious personal injury.


Save the receipt, warranty and these instructions. It is important that you read the entire manual to become familiar with this product before you begin using it.

This machine is designed for certain applications only. The distributor cannot be responsible for issues arising from modification. We strongly recommend this machine not be modified and/or used for any application other than that for which it was designed. If you have any questions relative to a particular application, **DO NOT** use the machine until you have first contacted your distributor to determine if it can or should be performed on the product.

GENERAL SAFETY RULES

 **WARNING:** Read and understand all instructions. Failure to follow all instructions listed below may result in serious injury.

 **CAUTION:** Do not allow persons to operate or assemble this low-profile oil drain until they have read this manual and have developed a thorough understanding of how the low profile oil drain works.

 **WARNING:** The warnings, cautions, and instructions discussed in this instruction manual cannot cover all possible conditions or situations that could occur. It must be understood by the operator that common sense and caution are factors which cannot be built into this product, but must be supplied by the operator.

WORK AREA

- Keep work area clean, free of clutter and well lit. Cluttered and dark work areas can cause accidents.
- Keep children and bystanders away while operating the low-profile oil drain. Distractions can cause you to lose control, so visitors should remain at a safe distance from the work area.
- Be aware of all power lines, electrical circuits, water pipes and other mechanical hazards in your work area, particularly those hazards below the work surface hidden from the operator's view that may be unintentionally contacted and may cause personal harm or property damage.
- Be alert of your surroundings. Using the low-profile oil drain in confined work areas may put you dangerously close to hot oil and rotating parts.
- Use only 3-wire extension cords that have 3-prong, grounding-type plugs and 3-prong receptacles that accept the equipment plug and meet requirements for the motor load. Where a 2-prong wall receptacle is encountered, it must be replaced with a properly grounded 3-prong receptacle installed in accordance with the National Electrical Code and local codes and ordinances. All wiring should be performed by a qualified technician.

PERSONAL SAFETY



WARNING:

- Hot oil can cause severe burns. Allow the engine oil to completely cool before draining the oil into the drain.
- An incorrectly-supported vehicle can tilt or fall and cause injury or death. Never work under a vehicle without proper support devices.
- Flame or heat sources may ignite the oil; resulting in fire, injury, and death. Never use or store the drain near open flames or heat sources.
- Engine exhaust contains Carbon Monoxide; an odorless; invisible gas that can cause injury or death. Do not use the drain with the vehicle's engine running.
- Always wear ANSI approved safety goggles and heat-resistant rubber gloves when using this product.
- Read and adhere to all warning and safety precautions in the owner's manual BEFORE use.
- Make sure the drain is used only on a dry, clean, level surface capable of supporting the weight of the vehicle being lifted and any additional tools and equipment.
- Remove the drain before lowering the vehicle.
- Used engine oil is toxic and should be properly disposed of or recycled.



- Never use the oil drain near open flames or heat sources.
- Make sure to remove the oil drain and all other tools and equipment before lowering the vehicle to the floor surface.



- Follow guidelines for engine oil disposal. Used engine oil should be removed from the vehicle and properly disposed of or recycled. Many states require recycling. Contact your local solid/liquid waste authority for information on recycling and/or disposal.
- Oil contains hazardous chemicals which may be harmful to the environment and hazardous to your health.

ASSEMBLY INSTRUCTIONS

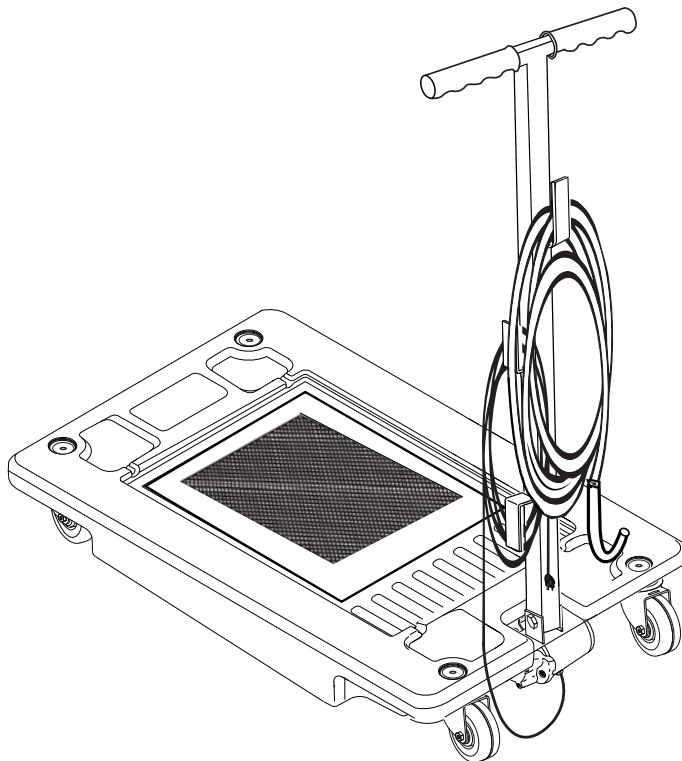
1. Check for the contents inside the box. It includes:

- Drain reservoir with electric pump
- Anti-Splash Screen
- Discharge Hose
- Steel “J” Spout
- Handle with two bolts
- 2 Hose Clamps

If any parts are missing, contact your supplier immediately.

REFER TO THE PARTS DRAWING ON PAGE 10 FOR DETAILS FOR THE FOLLOWING STEPS

2. Loosen the 13mm Allen bolts on either side of the base plate, and slide the base plate to one side to access fittings for the handle bolt.
3. Unwrap the handle and assemble it to the base plate using one 14mm bolt (included in the hardware package). Slide the base plate back and re-tighten the 13mm Allen bolts on either side of the base plate.
4. Assemble fitting to the outlet valve of the electric pump.
5. Connect one end of the discharge hose to the pump outlet and other end to the steel “J” spout and secure the hose at both ends using the hose clamps.
6. Hang the hose clamp onto the hose hanger, your ATD-5197K 17 Gallon Low Profile Oil Drain with Electric Pump is ready for use.



LOW-PROFILE OIL DRAIN USE AND CARE

- Do not modify the low-profile oil drain in any way. Unauthorized modification may impair the function and/or safety and could affect the life of the equipment. There are specific applications for which the low-profile oil drain was designed.
- Always check for damaged or worn out parts before using the low-profile oil drain. Broken parts will affect the low-profile oil drain's operation. Replace or repair damaged or worn parts immediately.
- Do not exceed the low-profile oil drain load capacity.
- Use the low-profile oil drain on flat and level surfaces capable of supporting the low-profile oil drain and its maximum load. Pushing or pulling the oil drain on a slanted or uneven surface can result in loss of control.
- When your low-profile oil drain is not in use, store it in a secure place out of the reach of children. Inspect it for good working condition prior to storage and before re-use.
- Keep the reservoir clean and free of grit and grease.

OPERATION



WARNING: Follow all safety precautions outlined in this manual and the vehicle manual.

- Move the oil drain under the vehicle, making sure the opening of the reservoir is positioned directly below the oil drain plug of the engine.
- Remove the oil drain plug from the engine, and allow the old oil to completely drain from the engine into the reservoir.
- Once the old engine oil is completely drained, replace the oil drain plug and refill engine oil to the manufacturers recommendations.
- When emptying the old oil from the reservoir of the oil drain, make sure to follow guidelines for engine oil disposal. If necessary, contact your local solid/liquid waste authority for information on recycling and/or disposal. Move the oil drain to where the old oil will be temporarily stored (e.g., a tank), put the long hose (14) into the tank, and plug in the electrical cord to activate pump until the old oil is evacuated from the drain.

MAINTENANCE

- Maintain your low-profile oil drain. It is recommended that the general condition of any low-profile oil drain be examined before it is used. Adopt a program of conscientious repair and maintenance. If any abnormal vibrations or noise occurs, have the problem corrected before further use. Have necessary repairs made by qualified service personnel. Before each use, Check for broken or bent parts, loose or missing parts, and any condition that may affect the proper operation of the product. If a problem occurs, have the problem corrected before further use. Do not use damaged equipment.
- When cleaning, use a clean cloth with detergent or mild solvent and store the oil drain in a safe and dry location.

PUMP SPECIFICS

- The pump supplied with your low-profile oil drain is a UL listed, USA made, 110V AC pump. This pump is **NOT SUBMERSIBLE**. This pump will handle water, oil and Ethylene Glycol and motor oils with a viscosity of up to 15W40. This pump is self priming to 7 feet if the impeller is initially wet (primed). **It is for intermittent use only** (not for constant use).

NOTE: This pump is **NOT** recommended for use with soap detergents, gasoline, diesel fuel or any flammable, explosive or combustible liquids or other fluids not compatible with pump component materials. **DO NOT** use unit in enclosed areas. This motor is an open motor and is **NOT** spark proof.

- When unpacking the unit, inspect carefully for any damage that may have occurred during transit. Check for loose, missing or damaged parts.
- Know the pump application, limitations and potential hazards.
- Never touch an operating motor. Modern motors are designed to operate at high temperatures.



WARNING: DO NOT use to pump flammable liquids such as gasoline, kerosene, diesel fuel, etc. DO NOT use in flammable or explosive atmospheres. Pump should only be used with liquids compatible with pump component materials. Failure to follow this warning can result in personal injury and/or property damage.

- Make certain that power source conforms to the requirements of this pump; 110-115V AC, 50~60 Hz.
- Provide adequate protection and guard around moving parts.
- Disconnect power before servicing a motor or the oil drain.
- Release all pressure from the system before servicing any component.
- Drain all liquids from the system before servicing.
- Secure the discharge line before starting the pump. An unsecured discharge line will whip, possibly causing personal injury an/or property damage.
- Check hoses for weak or worn condition before each use, making certain that all connections are secure.
- Periodically inspect pump and system components. Perform routine maintenance as required.



WARNING: RISK OF ELECTRIC SHOCK! NEVER CUT CORD!

- This equipment is only for use on 110-115V AC single phase and is equipped with an approved 3-conductor cord and 3-prong, grounding type plug. To reduce the risk of electric shock, the unit should be plugged directly into a properly installed and grounded 3-prong grounding type receptacle. The green (or green and yellow) conductor is the grounding wire. The motor must be securely and adequately grounded for your protection against shock hazards. Protect electrical cord from sharp objects, hot surfaces, oil and chemicals. Avoid kinking the cord. Replace or repair damaged or worn cords immediately.

PUMP SPECIFICS CONTINUED



WARNING: DO NOT HANDLE A PUMP OR PUMP MOTOR WITH WET HANDS OR WHEN STANDING IN WATER OR ON A WET OR DAMP SURFACE.

- Thermal protector tripping is an indication of motor overloading which is a result of operating the pump with high discharge restrictions. The motor is equipped with an automatic resetting thermal protector and may restart unexpectedly. Protector tripping is an indication of motor overloading as a result of operating the pump with low discharge restriction, excessively high or low voltage, inadequate wiring, pumping too hot of a liquid, incorrect motor connections or a defective motor or pump. Read the troubleshooting guide on the following page. Failure to follow warnings and cautions can result in personal injury or death and/or property damage.
- Protect pump from extreme heat, cold and humidity. This unit is not waterproof and is not intended to be used in showers, saunas or other potentially wet environments. The motor is intended to be used in a clean dry location with adequate supply of cooling air. Ambient temperature around motor should not exceed 104°F (40°C).

PUMP OPERATION

- It is recommended that impeller is wet before start-up for better priming. Pumps that are self priming should prime themselves within 30 seconds after pump is started. Wetting the impeller with fluid being pumped and keeping the impeller lubricated with petroleum jelly will lengthen its life and improve priming action. Running the impeller dry for as short as 30 seconds can ruin the impeller.
- Be sure hose attachments or piping connections are tight. Any leakage in suction side will prevent the pump from priming, causing premature failure.



CAUTION: Because the pump is thermally protected, it is designed to shut off temporarily in an overload condition, therefore, pumping extremely hot liquids is not recommended. Also, to protect the impeller from breakage, do not pump liquids with a temperature less than 40°F. (4°C)
DO NOT SUBMERGE THIS PUMP OR MOTOR IN WATER.

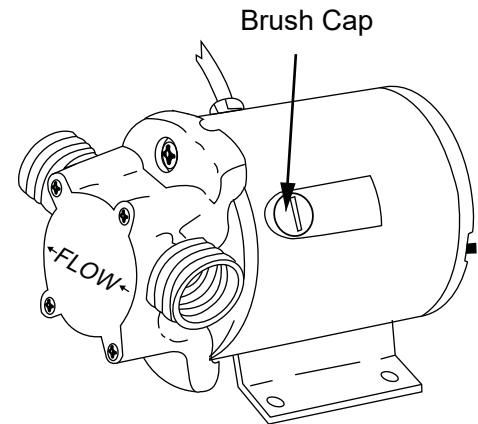
- This pump is turned on and off by plugging the cord into any 110-115V AC outlet. When unplugging, grasp by the plug, **DO NOT PULL ON THE CORD.**

PUMP MAINTENANCE

- Always drain pump when not in use. If pump is not going to be used for a month or more, Wipe pump body out thoroughly with a clean rag and a water based solvent – do NOT use cleaners that may affect the operation of the pump. Remove the body cover and take the impeller out, clean inside of pump body and apply a generous coating of petroleum jelly to both inside and impeller before replacing impeller in the body.
- Pump should be checked daily, weekly, monthly for proper operation. If anything has changed since unit was new, unit should be removed and replaced. Only qualified electricians or servicemen should attempt repairs to this unit. Improper repair and/or assembly can cause a shock hazard.

REPLACING THE BRUSHES

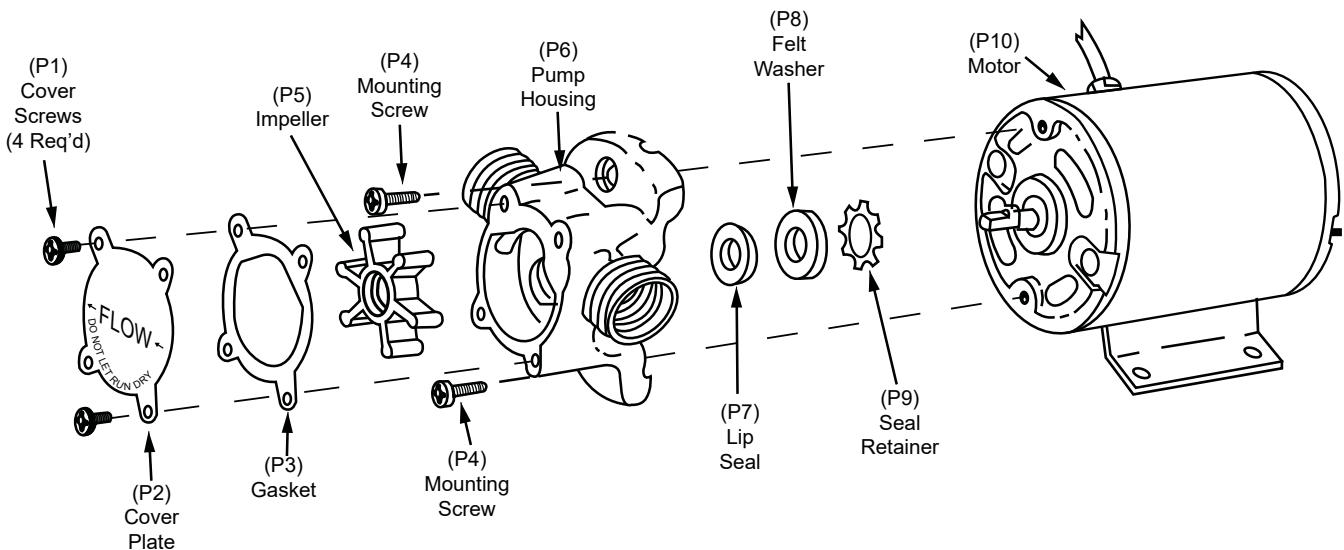
- Order part# PRT5197-21 (Brush kit (ACK-1066) from your supplier.
- Be sure pump is disconnected from its source of power.
- Unsnap brush cap by twisting it to the left, then lifting it from the motor housing.
- Remove brush, spring and spring holder cover by pulling them straight out of the brush holder.
- Install new brush and spring assembly with regard to the curvature of the front of the brush.
- Replace cap.



REPLACING THE IMPELLER

NOTE: The impeller is **NOT** a warranty item.

- Replace impeller when it is damaged by foreign objects, when run dry or when pumping a liquid not compatible with the impeller.
- Order service kit PRT5197-18 or PRT5197-19, from your supplier, depending on your needs. (See parts page for complete descriptions of each kit).
- Be sure pump is disconnected from its source of power.
- Remove cover plate (Ref P2 below) and gasket (Ref P3 below).
- Remove impeller (Ref P5 below)
- Grease new impeller with petroleum jelly lubricant and align the flat in the inside of the impeller with the flat on the motor shaft. Push impeller into place and at the same time, twist in a clockwise direction. This will bend the blades in the direction required for running.
- Replace cover using new gasket (Ref P3 below) provided with each PRT5197-18 or PRT5197-19 repair kit.
- Tighten all cover screws (Ref P1 below) evenly and snugly (generally about 2 ft. lbs.) Do not overtighten.



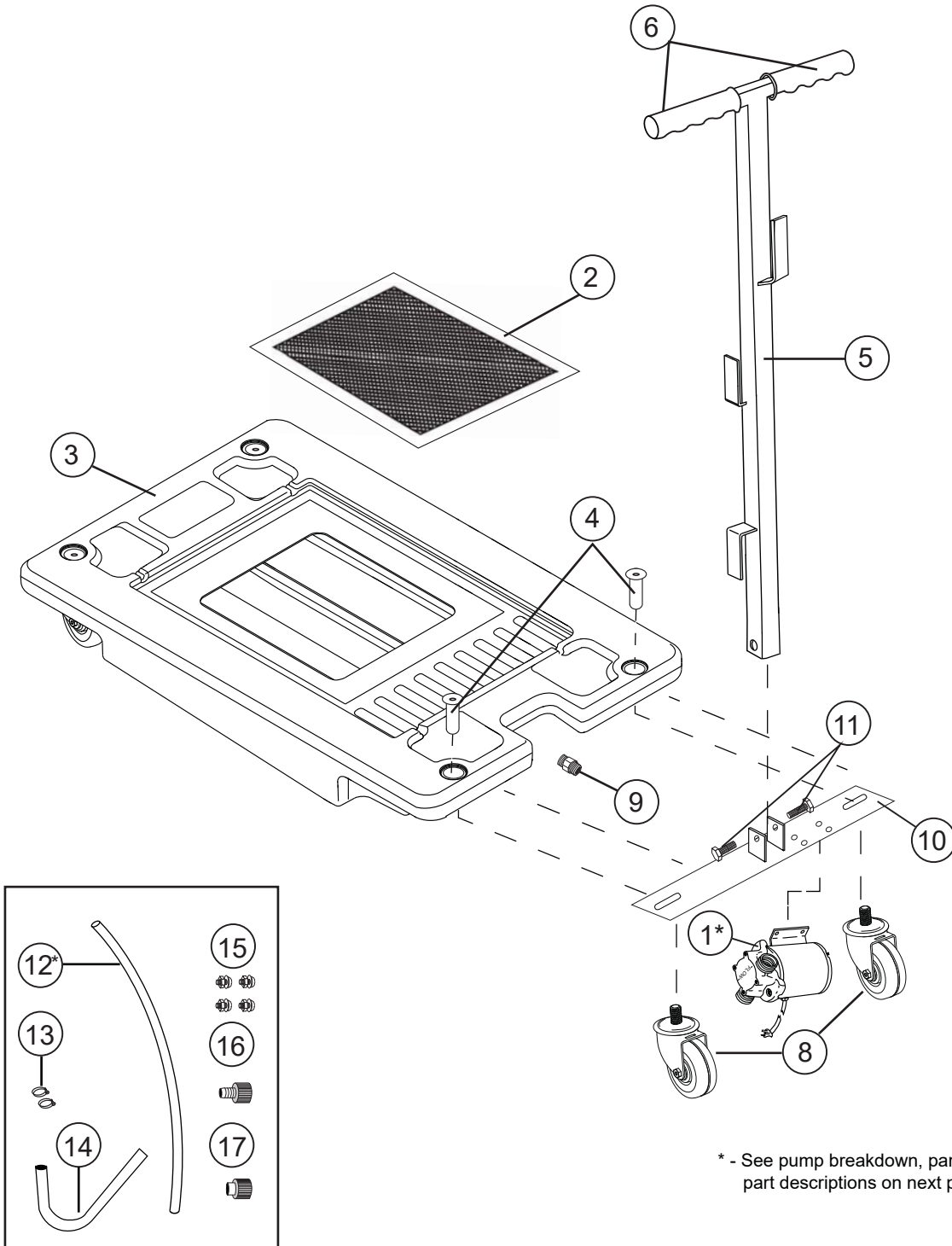
TROUBLESHOOTING

PROBLEM	POSSIBLE CAUSES	SOLUTION
Pump will not prime or retain prime after operating	<ol style="list-style-type: none"> 1. Air leak in suction line 2. Defective impeller 3. Seal worn 4. Gasket leaking 5. Groove worn in shaft or seal area 6. Suction lift too high 7. Hose kinked 8. Hose fitting not tight on head 	<ol style="list-style-type: none"> 1. Repair or replace 2. Replace 3. Replace 4. Replace 5. Replace motor 6. Lower pump 7. Straighten hose 8. Tighten hose
Pump runs but no fluid comes out	<ol style="list-style-type: none"> 1. Faulty suction priming 2. Damaged impeller 3. Discharge height too high 4. Clogged inlet 	<ol style="list-style-type: none"> 1. Repair or replace 2. Replace 3. Lower discharge height 4. Clean suction line
Motor runs too hot	<ol style="list-style-type: none"> 1. Voltage may be incorrect 2. Excessive back pressure in discharge 3. Impeller swollen 4. Liquid too viscous 5. Plugged or kinked discharge hose 6. Insufficient air flow on motor 	<ol style="list-style-type: none"> 1. Voltage should be 110-115V AC, 60Hz 2. Reduce pressure 3. Replace impeller 4. Reduce viscosity of liquid 5. Examine and repair 6. Place in open air location
Flow rate is low	<ol style="list-style-type: none"> 1. Piping or hose is plugged or damaged 2. Clogged impeller 3. Worn impeller 4. Voltage is incorrect 5. Liquid too viscous 	<ol style="list-style-type: none"> 1. Clean or replace 2. Clear obstructions 3. Replace 4. Voltage should be 110-115V AC, 60Hz 5. Reduce viscosity of liquid
Seal leaks	<ol style="list-style-type: none"> 1. Seal worn out 2. Shaft grooved 3. Pump head loose on motor 	<ol style="list-style-type: none"> 1. Replace 2. Replace motor 3. Tighten pump mounting screws
Pump will not run	<ol style="list-style-type: none"> 1. No electricity 2. Impeller jammed 3. Motor may be damaged 	<ol style="list-style-type: none"> 1. Outlet should be 110-115V AC, 60Hz 2. Clear obstruction 3. Replace

PUMP SPECIFICATIONS	
Power supply required.....	110-115V AC, 60Hz
Fuse requirement.....	2 Amps
Dimensions.....	6.25" L x 3.50" H x 4" W
Maximum liquid temperature.....	160° F
Minimum liquid temperature.....	40° F
Cord length/type.....	6', 18/3 type SJ w/3 prong (grounded) type plug
Motor type.....	UL/CSA, universal, external brush holder
Thermal protection.....	Automatic
Motor amps.....	1.40 Amps
Duty cycle.....	Intermittent - max 30 minutes
Pump body material.....	Bronze
Impeller.....	Nitrile
Lip seal.....	Nitrile
Lip seal metal retainer.....	B/L-22
Motor shaft material.....	303 SS
Pump Gasket.....	Neoprene
Cover.....	316 SS
Screws.....	18-8 SS
Pump shipping weight.....	6 lbs

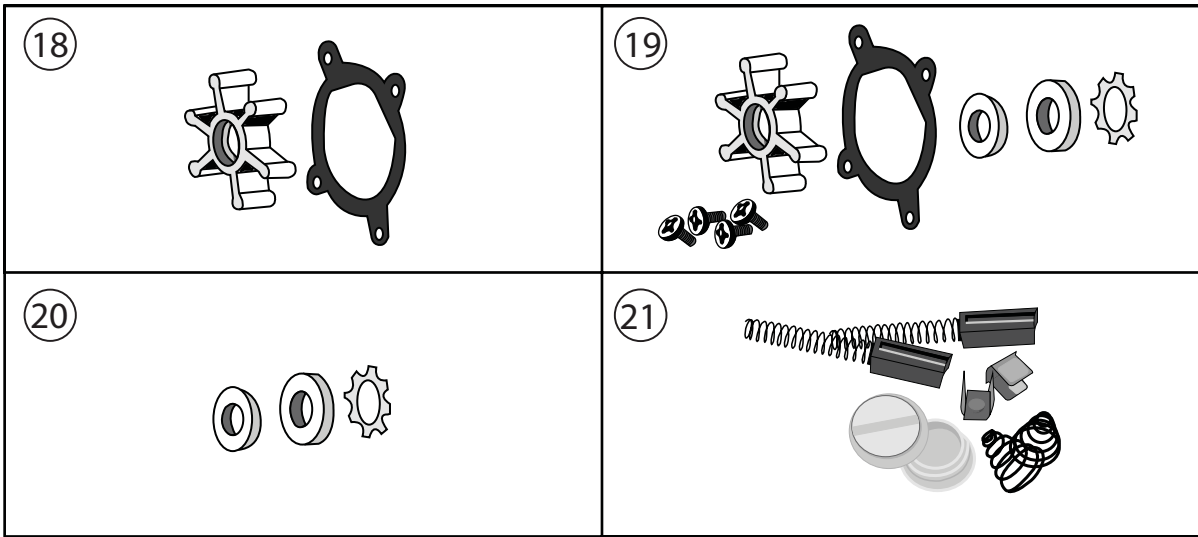
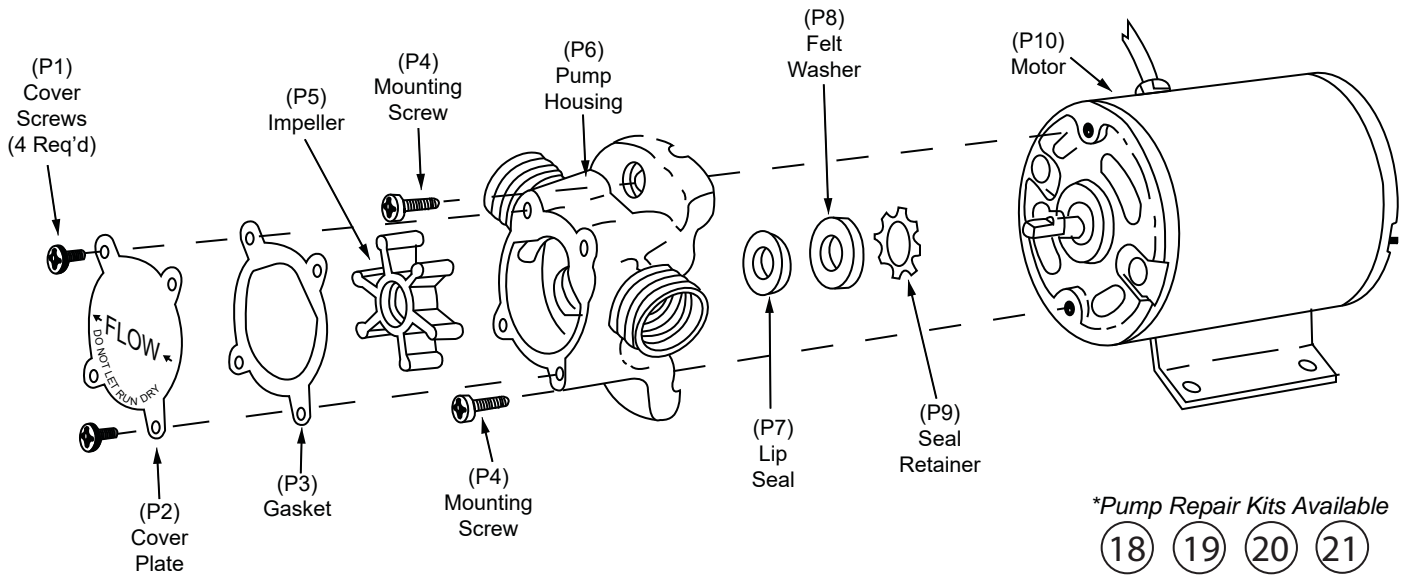
REPLACEMENT PARTS

Not all components of this product are replacement items, but are illustrated as a convenient reference for position in the assembly sequence. When ordering parts, give model number, part number and description. Call your distributor for current pricing:



* - See pump breakdown, part numbers and part descriptions on next page.

- *Replacement hose (12) is supplied in a single piece.
- For discharge hose, cut to 78.75" (2000mm)
 - For feeder hose, cut to 15" (380mm)



ITEM#	ORDERING PART#	PART DESCRIPTION
1	PRT5197-01	PUMP (AC-106-10)
2	PRT5197K-02	FILTER SCREEN (SVE/PLT/TD/17/I)
3	PRT5197K-03	RESERVOIR (SA/TD/17G/I)
4	PRT5197K-04	CASTER LOCKNUT (x4) (HLD/WEL/TD/HD/17)
5	PRT5197K-05	T-HANDLE (HND/TD/17/I)
6	PRT5197K-06	HANDLE GRIP (GRP/LBP-04/BL)
8	PRT5197K-08	CASTER (x4) (WEL/TD/HD/17)
9	PRT5197K-09	BUNG KIT (KIT/BUNG/TD)
10	PRT5197K-10	MOUNTING BRACKET (PLT/ST/TD/17/I)
11	PRT5197K-11	SCREW (x4) (SCR/GNB/TD)
12	PRT5197K-HK	HARDWARE KIT (INC. 12,13,14,15,16 & 17) (KIT/HDWR/TD) HOSE 93.75" (2380mm)
13	PRT5197K-HK	HARDWARE KIT (INC. 12,13,14,15,16 & 17) (KIT/HDWR/TD) HOSE CLAMPS (2)
14	PRT5197K-HK	HARDWARE KIT (INC. 12,13,14,15,16 & 17) (KIT/HDWR/TD) "J" SPOUT
15	PRT5197K-HK	HARDWARE KIT (INC. 12,13,14,15,16 & 17) (KIT/HDWR/TD) BOLTS (4)
16	PRT5197K-HK	HARDWARE KIT (INC. 12,13,14,15,16 & 17) (KIT/HDWR/TD) ADAPTER
17	PRT5197K-HK	HARDWARE KIT (INC. 12,13,14,15,16 & 17) (KIT/HDWR/TD) ADAPTER
18	PRT5197-18	SERVICE KIT (ACK-1062-10) OIL RESISTANT IMPELLER (P5) AND GASKET (P3)
19	PRT5197-19	SERVICE KIT (ACK-1064-10) OIL RESISTANT IMPELLER (P5), GASKET (P3), SEAL (P7), FELT WASHER (P8) AND SEAL RETAINER (P9)
20	PRT5197-20	SERVICE KIT (ACK-1070-10) SEAL (P7), FELT WASHER (P8) AND SEAL RETAINER (P9)
21	PRT5197-21	BRUSH KIT (ACK-1066)

*Hose supplied in single piece. Cut discharge hose to 78.75" (2000mm) & feeder hose to 15" (380mm)
Please call your distributor or supplier for all of your parts needs



WARRANTY

1 YEAR LIMITED WARRANTY

THIS WARRANTY AND CONFIRMED RECEIPT(S) SHOULD BE RETAINED BY THE CUSTOMER AT ALL TIMES

PURCHASED FROM: _____

DATE PURCHASED: _____

INVOICE/RECEIPT NUMBER: _____

Your ATD-5197K is warranted for a period of 12 months from the original purchase date.

For a period of one (1) year from your purchase date, ATD Tools Inc. will repair or replace (at its option) without charge, your ATD product if it was purchased new and the product has failed due to a defect in material or workmanship which you experienced during normal use of the product. This limited warranty is your exclusive remedy.

To access the benefits of this warranty, contact your supplier, or point of sale directly. You may be advised to return the product under warranty, freight prepaid, to your supplier for warranty determination.

If this ATD product is altered, abused, misused, modified, or undergoes service by an unauthorized technician, your warranty will be void. We are not responsible for damage to ornamental designs you place on this ATD product and such ornamentation should not cover any warnings or instructions or they may void the warranty. This warranty does not cover scratches, superficial dents, and other abrasions to the paint finish that occur under normal use. It also does not cover normal wear items such as but not limited to brushes, batteries, drill bits, drill chucks, pads or blades.

Subject to the law in your state:

- (1) Your sole and exclusive remedy is repair or replacement of the defective product as described above.
- (2) ATD is not liable for any incidental damages, including but not limited to, lost profits and unforeseeable consequences.
- (3) The repair and replacement of this product under the express limited warranty described above is your exclusive remedy and is provided in lieu of all other warranties, express or implied. All other warranties, including implied warranties and warranties of merchantability or fitness for a particular purpose are disclaimed and, if disclaimer is prohibited, these warranties are limited to one year from your date of purchase of this product.

Some states' laws do not allow limited durations on certain implied warranties and some states' laws do not allow limitations on incidental or consequential damages. You should consult the law in your state to determine how your rights may vary.

[Affix receipt or invoice here for safe keeping]