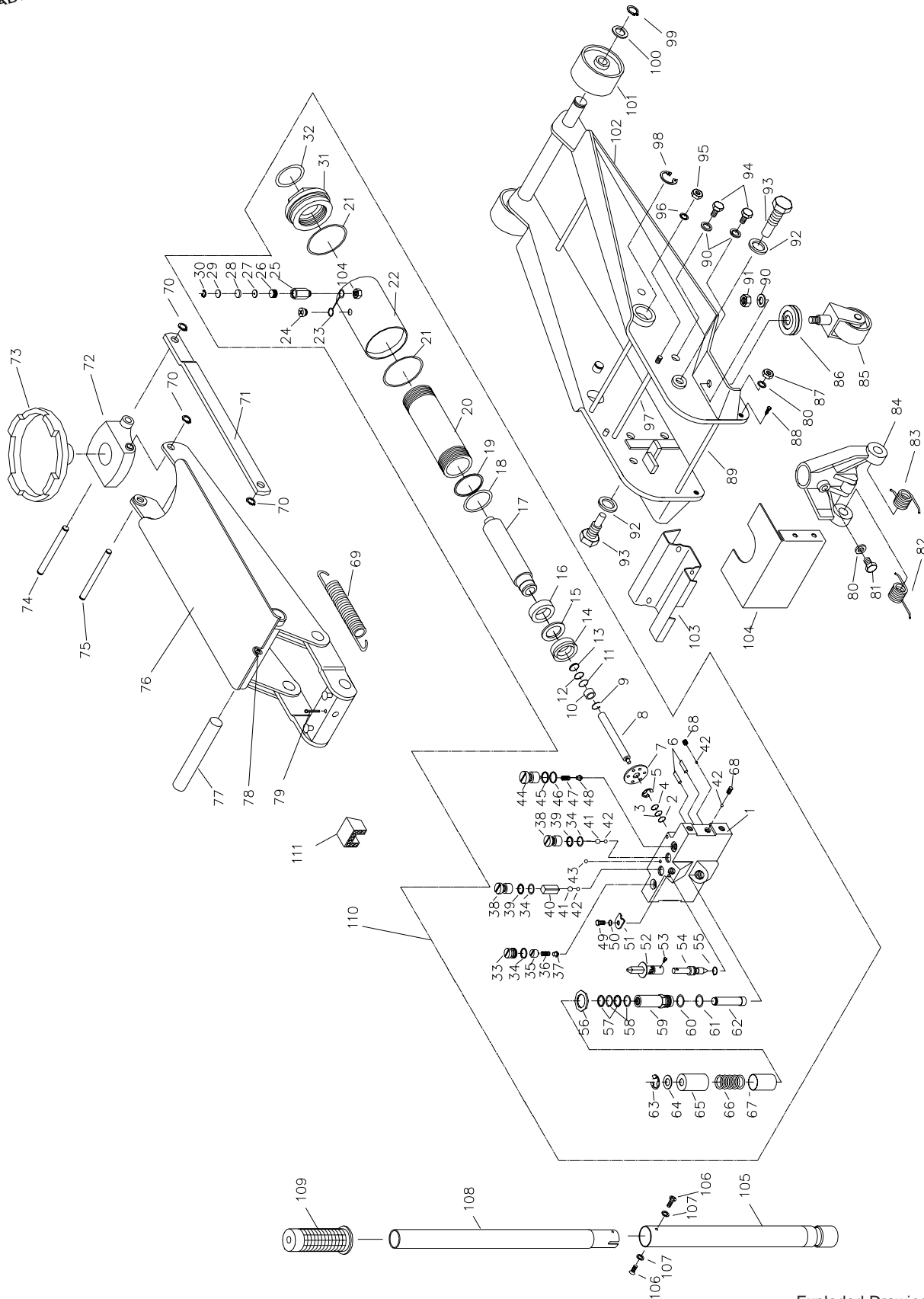




# PARTS LIST

Model # ATD7352

ITEM	PARTCODE	DESCRIPTION	QTY	ITEM	PARTCODE	DESCRIPTION	QTY
1	N / A	base	1	64	N / A	washer	1
2	*	back-up washer	1	65	N / A	spring casing	1
3	*	o-ring	1				
4	N / A	washer	1	66	N / A	spring	1
5	N / A	washer	1	67	N / A	spring casing	1
				68	N / A	screw	3
6	N / A	filter	2	69	G931-00003-000	return spring	2
7	N / A	wahser	1	70	N / A	"C" clip	6
8	N / A	ram plunger	1				
9	N / A	washer	1	71	N / A	radius link	2
10	N / A	guide ring	1	72	N / A	saddle bracket	1
				73	G610-00007-000	saddle	1
11	*	back-up washer	1	74	N / A	radius link axle	1
12	*	o-ring	1	75	N / A	lift arm axle (I)	1
13	N / A	washer	1				
14	*	u-cup for ram	1	76	N / A	lift arm	1
15	*	back up washer	1	77	N / A	lift arm axle (II)	1
				78	5701-00006-000	grease fitting nipple	1
16	N / A	bushing cover	1	79	N / A	retainer	1
17	N / A	ram plunger	1	80	5303-00008-000	lock washer	3
18	*	o-ring	1				
19	*	back-up washer	1	81	5102-08016-000	screw	1
20	N / A	cylinder	1	82	G610-00008-000	return spring (I)	1
				83	G890-00004-000	return spring (II)	1
21	*	o-ring	2	84	N / A	handle fork	1
22	N / A	reservoir	1	85	G931-05000-000	caster assy.	2
23	N / A	washer	1				
24	N / A	screw	1	86	N / A	bearing	2
25	N / A	air vent screw	1	87	N / A	nut	2
				88	N / A	screw	2
26	N / A	washer	1	89	N / A	frame tie rod (I)	1
27	N / A	washer	1	90	N / A	lock waher	6
28	N / A	washer	1				
29	N / A	washer	1	91	N / A	nut	2
30	N / A	washer	1	92	N / A	lock washer	2
				93	N / A	R. H. handle bolt	2
31	N / A	top nut	1	94	N / A	screw	4
32	*	o-ring	1	95	N / A	nut	2
33	N / A	guard screw	1				
34	*	o-ring	3	96	N / A	lock washer	2
35	N / A	safety valve screw	1	97	N / A	frame tie rod (II)	1
				98	N / A	washer	2
36	N / A	spring	1	99	5304-00019-000	"C" clip	2
37	N / A	valve	1	100	5301-00020-000	washer	2
38	N / A	bolt	2				
39	*	back-up washer	2	101	N / A	front wheel	2
40	N / A	washer	1	102	N / A	R. & L. H side plate	1
				103	N / A	cover	1
41	*	steel ball	2	104	N / A	back cover	1
42	*	steel ball	5	105	N / A	handle assy. (I)	1
43	*	o-ring	1				
44	N / A	screw	1	106	G596-06004-000	screw	2
45	*	back-up washer	1	107	N / A	lock washer	2
				108	N / A	handle assy. (II)	1
46	*	o-ring	1	109	G933-00001-000	handle grip	1
47	N / A	spring	1	110	G610-11000-000	hydraulic power unit	1
48	N / A	valve	1				
49	N / A	screw	1	111	N / A	stator	1
50	N / A	lock washer	1				
				112	G610-90009-112	repair kits (includes #2, 3, 11, 12, 14, 15, 18, 19, 21, 32, 34, 39, 41, 42, 43, 45, 46, 55, 57, 58 & 60)	1
51	N / A	washer	1				
52	N / A	universal joint	1	G610-90009-113	handle assy (#105,106,107,108 & 109)	1	
53	N / A	screw	1	G610-90009-114	front wheel assy. (#99, 100 & 101)	2	
54	G610-03008-000	release valve	1	G610-90009-115	castor assy. (#85, 86, 90 & 91)	2	
55	*	o-ring	1	G610-90009-116	filler / vent screw assy. (#23, 24, 25, 26, 27, 28, 29, 30)	1	
				G610-90009-117	universal joint assy. (#52)	1	
56	N / A	washer	1				
57	*	back-up washer	2				
58	*	o-ring	2				
59	G610-03003-000	pump cylinder	1				
60	*	o-ring	1				
61	N / A	back-up washer	1				
62	G610-03004-000	pump piston	1				
63	N / A	"E" clip	1				



# ATD TOOLS

## PRODUCT SPECIFICATIONS

ATD MODEL #:	ATD7352
DESCRIPTION:	HEAVY DUTY <i>Swift Lift</i> SERVICE JACK
CAPACITY:	2 1/2 TON
JACK SIZE:	29 3/4" (L) X 13 1/4" (W) X 6 1/4" (H)
SADDLE MIN. HEIGHT:	3 3/4"
SADDLE MAX. HEIGHT:	20"
<b>ONE PUMPLIFTING HEIGHT:</b>	<b>10 7/8" (NO LOAD)</b>
ONE PIECE HANDLE LENGTH:	49 7/8" <b>ONE PIECE</b>
OPERATING FORCE:	158.4 LBS (Full Load)
SADDLE DIA.:	5 1/2"
F. WHEEL DIA.:	3 1/8"
F. WHEEL WIDTH:	2 1/8"
CASTER DIA.:	2 1/4"
VOLUME OF HD. OIL:	250 C.C.
NET WEIGHT:	92.0 LBS
GROSS WEIGHT:	98.6 LBS
INNER BOX DIM.:	33 7/8" (L) X 14 1/8" (W) X 7 5/8" (H)
CARTON BOX DIM.:	34 1/4" (L) X 14 5/8" (W) X 8 1/8" (H)

### FEATURE



- MEETS ASME SAFETY STANDARD
- NO LOAD FIRST PUMP, LIFTING POINT HEIGHT UP TO 10 7/8"
- LIFTING RANGE: 3 3/4" TO 20"
- EXTRA HEAVY-DUTY WELDED STEEL CHASSIS.
- UNIVERSAL JOINT RELEASE VALVE
- PATENTED BUILT-IN BY-PASS DEVICE MECHANISM